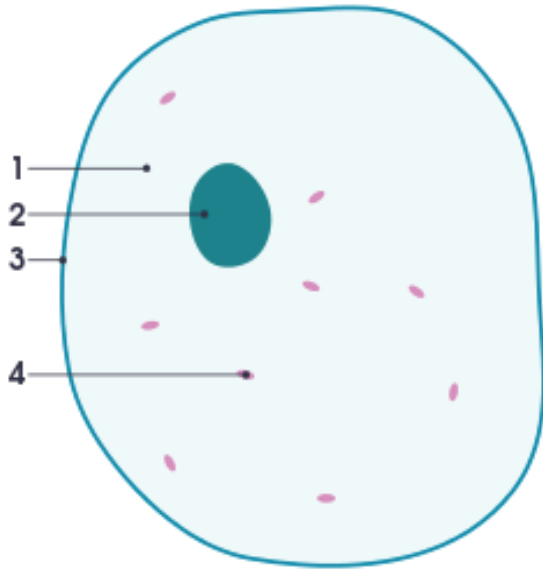


Name: _____ Class: _____

Cells

Label the parts of the cell against the numbers below.

1.



1. _____

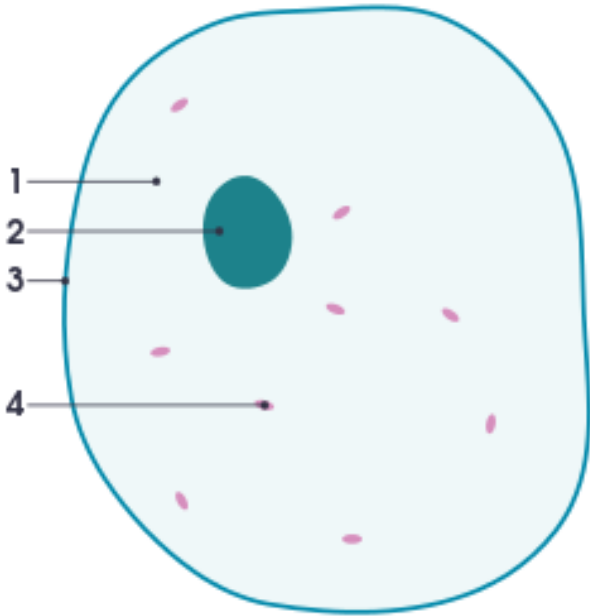
2. _____

3. _____

4. _____

2. The basic structural units of organisms are called _____.
 - a. cell wall
 - b. atoms
 - c. cells
 - d. nucleus
3. What is the role of the nucleus ?
 - a. acts as the control center of the cell
 - b. functions as a water storage
 - c. a storage for enzymes
 - d. absorbs nutrients
4. Identify an organism below that has cells that have a cell wall.
 - a. octopus
 - b. shark
 - c. rat
 - d. pear plant
5. Cells are known to reproduce by _____.
 - a. ionizing
 - b. dividing
 - c. subtracting
 - d. cracking

1.



Label the parts of the cell against the numbers below.

1. **cytoplasm**
2. **nucleus**
3. **plasma membrane**
4. **mitochondrion**

2. The basic structural units of organisms are called _____.

- a. cell wall
- b. atoms
- c. cells
- d. nucleus

3. What is the role of the nucleus ?

- a. acts as the control center of the cell
- b. functions as a water storage
- c. a storage for enzymes
- d. absorbs nutrients

4. Identify an organism below that has cells that have a cell wall.

- a. octopus
- b. shark
- c. rat
- d. pear plant

5. Cells are known to reproduce by _____.

- a. ionizing
- b. dividing
- c. subtracting
- d. cracking