

Meiosis Practice Worksheet

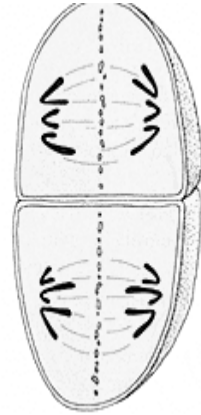
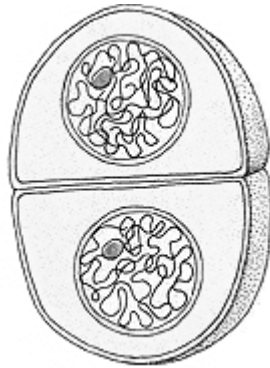
On each of the images, label the phase of meiosis:

1. _____

2. _____

3. _____

4. _____

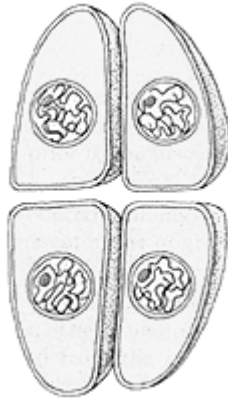
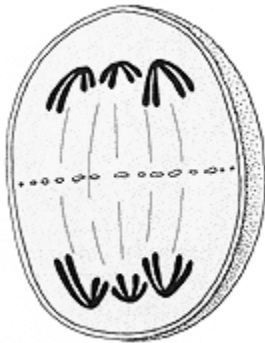


5. _____

6. _____

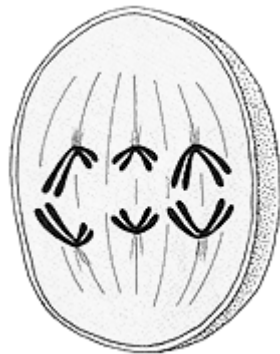
7. _____

8. _____



9. _____

10. _____



Fill in the blank:

11. A cell with a diploid number of 20, undergoes meiosis. This will produce _____ daughter cells, each with _____ chromosomes.

12. Crossing over occurs during this phase: _____

13. Tetrads line up along the equator during this phase: _____

14. At the end of meiosis I, _____ daughter cells are created.

These daughter cells are [diploid | haploid].

15. Meiosis creates what type of cell: _____

Fill in the Blank with the proper phase of Meiosis (Interphase will be used).
Then put a number to identify the order of the phases. (1st, 2nd, 3rd, etc...)

Phase
↓

Order
↓

- | | |
|-----------|--|
| 16. _____ | _____ homologous chromosome line up in the center of the cell |
| 17. _____ | _____ spindle fibers pull homologous pairs to ends of the cell |
| 18. _____ | _____ 4 haploid (N) daughter cells form |
| 19. _____ | _____ cells undergo a round of DNA replication |
| 20. _____ | _____ sister chromatids separate from each other |
| 21. _____ | _____ 2 diploid (2N) daughter cells form |
| 22. _____ | _____ spindle fibers attach to the homologous chromosome pairs |
| 23. _____ | _____ individual chromatids move to each end of the cell |
| 24. _____ | _____ crossing-over (if any) occurs |